

Gerard Power

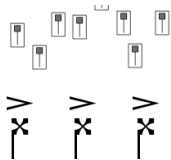
Conch

for Solo Violin

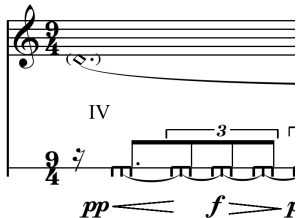
Instructions



Hold the violin sideways; place mouth near the f-hole of the instrument and blow into it.



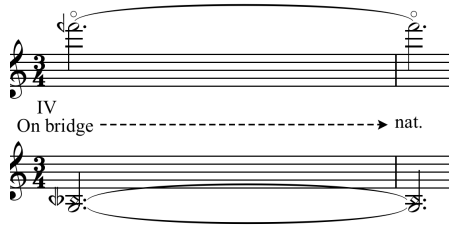
While blowing into the f-hole of the instrument, accompany this action with a rapid scrambling around the fingerboard with hammering L.H. fingers, indicated by the mallet symbol



Bow the 4th string on the bridge to produce white-noise; the L.H. touches the harmonic as shown without the pitch being audible



Bow on the 3rd (D) string on top of the bridge", producing as much 'white noise' as possible. The 'mallet' symbol in conjunction with the triangular notehead requires a stabbing of the L.H. 2nd finger onto the G string and a subsequent glissando at the speed required to evenly fill out the gap between the indicated pitches



In this case nat. refers to the sounding point for the bow where the pitch is produced most clearly

Duration: 6 minutes circa.

Conch

for Solo Violin

Gerard Power

rit.

$\text{♩} = 45$ $\text{♩} = 60$

fp fp fp *sim.* *ppp* *fp fp fp* *sim.* *ppp*

$\text{♩} = 45$ *fp fp fp* *sim.* *pp* *p* *ppp*

pp *< mf* *p* *mf* *pp* *p* *pppp* *pp* *< f* *pp* $\frac{9}{4}$

$\frac{9}{4}$

IV

pp *f* *p* *ppp* *mf* *p* *pp* *mf*

20
4

20
4

p \leftarrow *fp* \leftarrow *f* *mp* \leftarrow *f* *pp* \leftarrow *mf*

20
4

f \leftarrow *pp* *f* \leftarrow *ppp* \leftarrow *f* \leftarrow *mf* \leftarrow

1 (L.H.)

IV

3 5

5 3 3

3/4

3/4

p \leftarrow *fp* \leftarrow *ppp* \leftarrow *f* \leftarrow *pp* \leftarrow *mp* \leftarrow *f* \leftarrow *pp* \leftarrow *mf*

III
IV
On bridge

nat.

6/4

6/4

ppp \leftarrow *mp*

2

6/4

6/4

f \leftarrow *f* \leftarrow *f* \leftarrow *f* \leftarrow *ppp*

R.H. pizz.

III
IV II

arco
sul pont.

II°

L.H. pizz.

IV *ff*

6/4

6/4

IV
On bridge ----- nat.
L.H. pizz. +
f (L.v.)

Detailed description: This system contains measures 4, 5, and 6. Measure 4 is in 3/4 time with a treble clef and a natural sign above the staff. Measure 5 is in 4/4 time. Measure 6 is in 2/4 time. The bass staff shows a sequence of notes: a dotted quarter note, a quarter note, a quarter note, and a quarter note. A slur covers the first two notes, and a circled slur covers the last two. A double bar line is below the bass staff between measures 5 and 6. The instruction 'IV On bridge' is above measure 4, with a dashed arrow pointing to 'nat.' above measure 5. 'L.H. pizz.' is above measure 6, followed by a '+' sign. The dynamic *f* (L.v.) is at the end of measure 6.

7 dolce
I arco
p

Detailed description: This system contains measure 7 in 2/4 time with a treble clef. The instruction '7 dolce' is in a box above the staff. 'I arco' is above the first note. The dynamic *p* is below the first note. The staff shows a series of notes with a slur and a crescendo hairpin. A circled slur is under the first note. A bracket below the staff contains a quarter note and a half note.

pizz. II
III I
f
arco 8
p
pizz. 3
mf

Detailed description: This system contains measures 8, 9, and 10. Measure 8 is in 2/4 time with a treble clef and a key signature of one sharp. The instruction 'pizz. II' is above the first note. 'III I' is below the first note. The dynamic *f* is below the first note. Measure 9 is in 4/4 time. The instruction 'arco 8' is above the first note. The dynamic *p* is below the first note. Measure 10 is in 4/4 time. The instruction 'pizz. 3' is above the first note. The dynamic *mf* is below the first note.

III arco
p < *mf* *mp*

Detailed description: This system contains measures 11 and 12. Measure 11 is in 4/4 time with a treble clef. The instruction 'III arco' is above the first note. The dynamic *p* is below the first note. Measure 12 is in 7/8 time. The dynamic *mp* is below the first note. A crescendo hairpin is between measures 11 and 12.

9 dolcissimo
I
gliss.
mf

Detailed description: This system contains measure 9 in 7/8 time with a treble clef. The instruction '9 dolcissimo' is in a box above the staff. 'I' is above the first note. The instruction 'gliss.' is above the first note. The dynamic *mf* is below the first note. The staff shows a series of notes with a slur and a crescendo hairpin.

III 10
IV

nat. -----> m.s.p.

con sord.

f *dim. poco a poco*

mp

pp